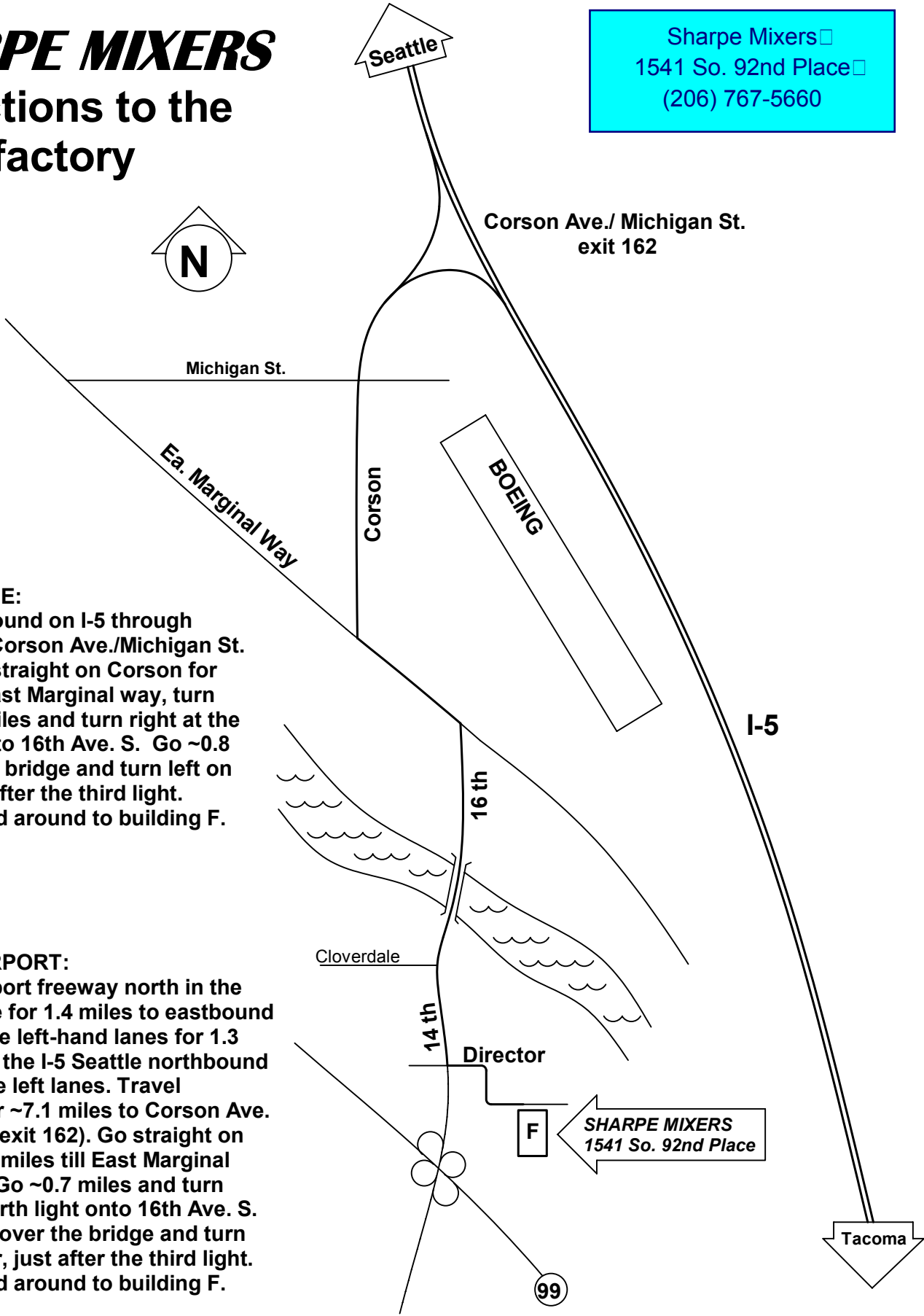
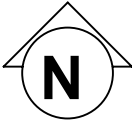


SHARPE MIXERS

Directions to the factory

Sharpe Mixers ☐
 1541 So. 92nd Place ☐
 (206) 767-5660



FROM SEATTLE:
 Travel southbound on I-5 through downtown to Corson Ave./Michigan St. (exit 162). Go straight on Corson for 1.2 miles till East Marginal way, turn left. Go ~0.7 miles and turn right at the fourth light onto 16th Ave. S. Go ~0.8 miles, over the bridge and turn left on Director, just after the third light. Follow the road around to building F.

FROM THE AIRPORT:
 Follow the Airport freeway north in the right hand lane for 1.4 miles to eastbound 518. Stay in the left-hand lanes for 1.3 miles and take the I-5 Seattle northbound exit. Stay in the left lanes. Travel northbound for ~7.1 miles to Corson Ave. / Michigan St. (exit 162). Go straight on Corson for 1.2 miles till East Marginal way, turn left. Go ~0.7 miles and turn right at the fourth light onto 16th Ave. S. Go ~0.8 miles, over the bridge and turn left on Director, just after the third light. Follow the road around to building F.